



未來鷹架私人有限公司

**FUTURE SCAFFOLD PTE LTD**

200707569E



*Our Services:*

- 1. Building Maintenance*
- 2. Construction*
- 3. Industrial Works*
- 4. Events & etc...*

*SPECIALIZED IN SCAFFOLD SERVICES*

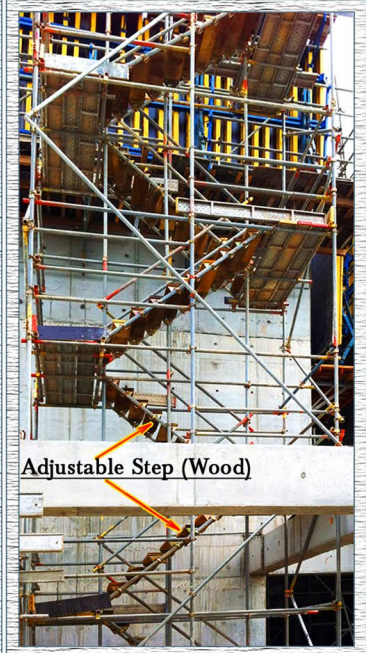
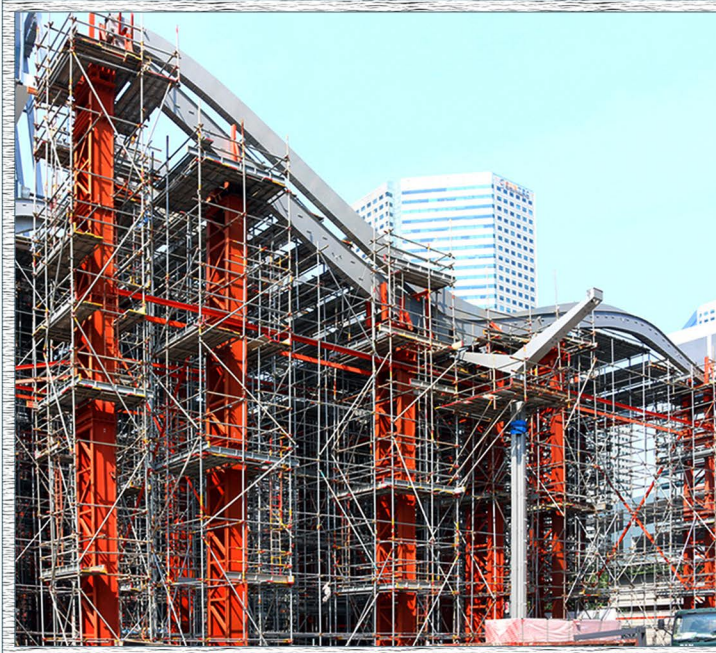


Main Office:  
7 Mandai Link #04-38  
Mandai Connection  
Singapore 728653  
Email: [futures7en@yahoo.com](mailto:futures7en@yahoo.com)  
Tel: +(65) 6358 2101 | Fax: +(65) 63582142  
Website: [www.futurescaffold.net](http://www.futurescaffold.net)





# TUBE & COUPLING



Pipe



Fixed Coupler (JIS)



Swivel Coupler (JIS)



Sleeve Coupler



Metal Deck



Bone Joint



Clamp Cover



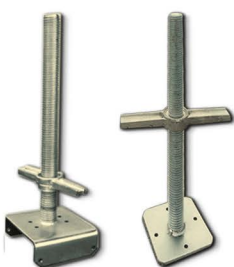
End Cap



Beam Coupler (JIS)



Limpet



U Jack / Jack Base



Base Plate (JIS)



Steel Prop



GI-Wire



Castor Wheel





Frame



Cross Brace



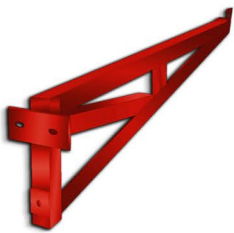
Joint Pin



Fixed Cat Walk



Open Cat Walk



Bracket



Anchor Bolt



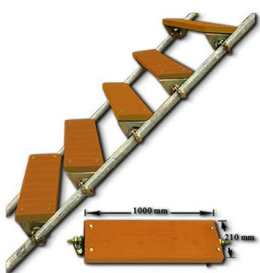
Cable



Eye Bolt



Cable Clamp



Adjustable Step (wood)



Adjustable Step (Metal)



Step Ladder



Monkey Ladder



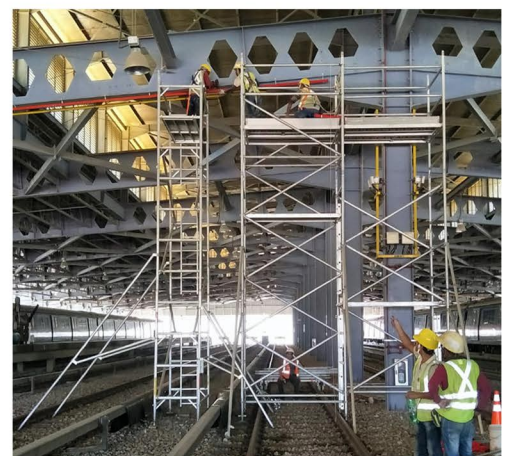
U Clamp



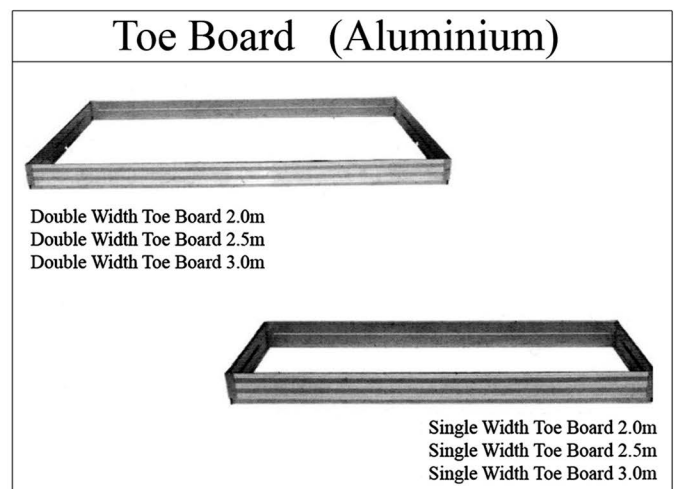
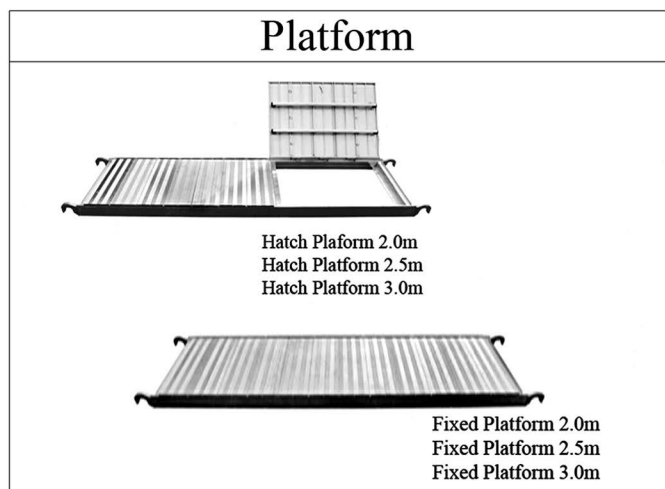
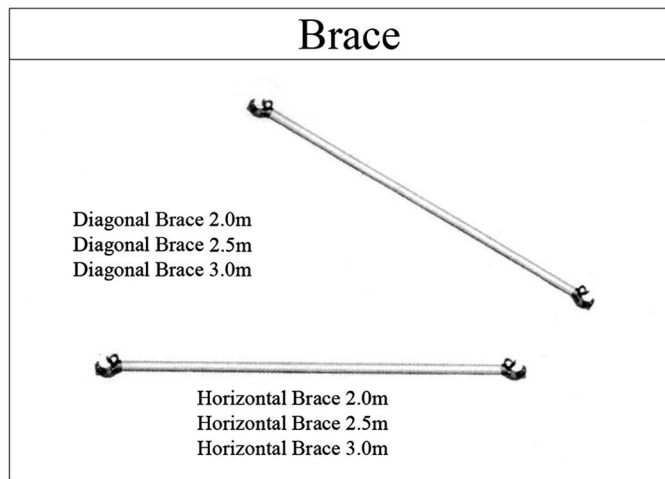
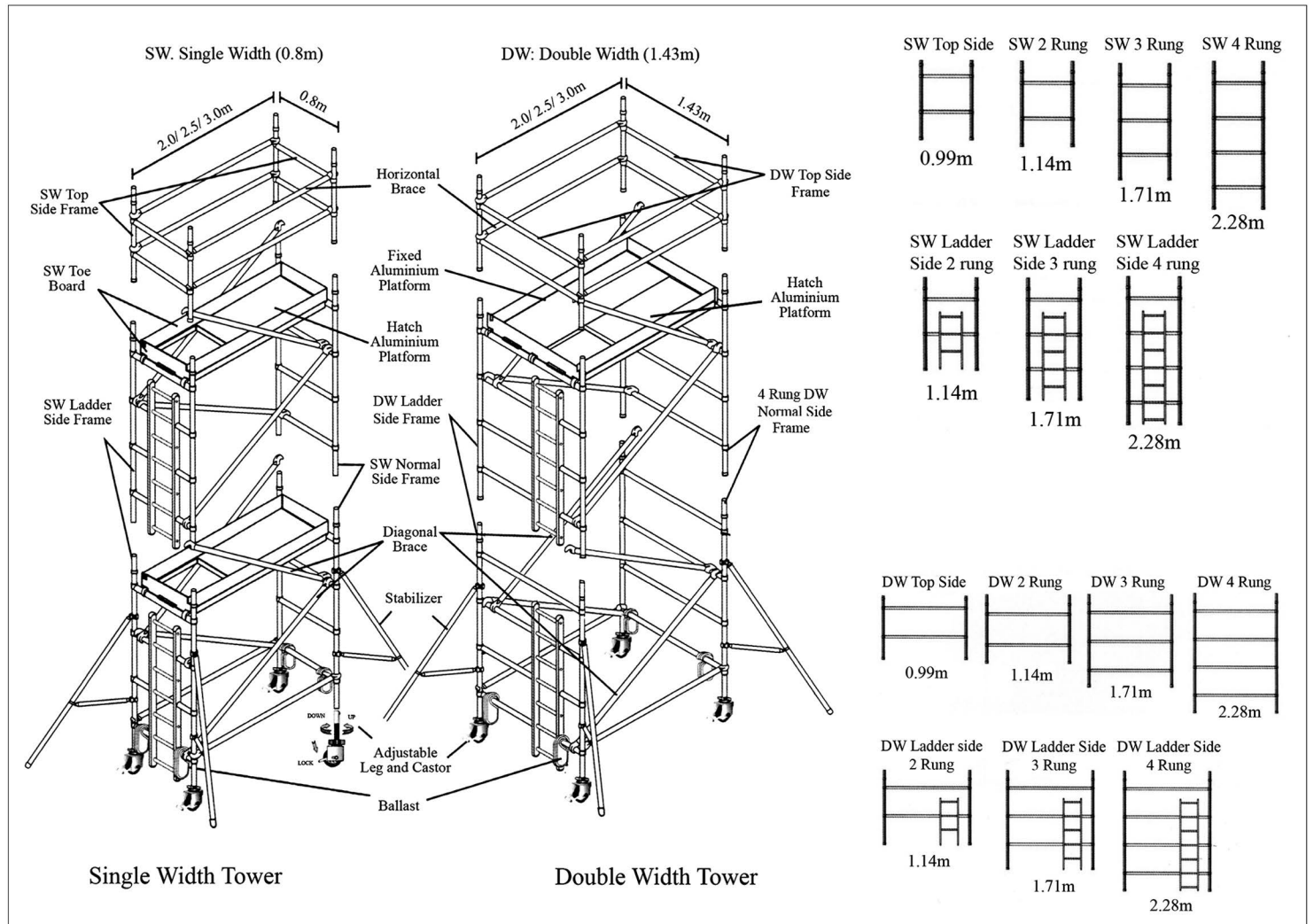
# MODULAR SYSTEM











## Accessories



Ballast 20kg



Paraller Coupler

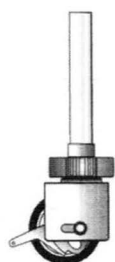
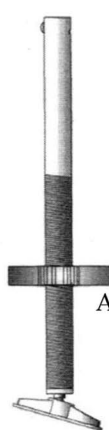


Swivel Coupler

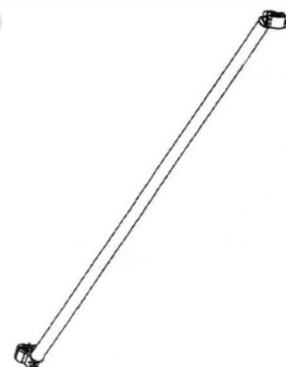


Fixed Coupler

### Adjustable Leg

Adjustable Leg  
With Castor Wheel  
200mm 8"Adjustable Leg with  
Fixed Base PlateAdjustable Leg  
with Swivel  
Base

### Easy Access

Easy Access  
with Landing  
Platform

Easy Access handrail

## Tower Scaffold

Tower scaffolds are a particular form of scaffolding that usually consist of fabricated frame units constructed as single-bay towers. Most available tower systems are aluminium, but steel systems are also available. A tower scaffold that is fitted with castor wheels equipped with effective locking devices is deemed to be a mobile tower scaffold.

\*A tower scaffold should be erected by a competent person.

\*Edge protection such as guard-rails must be provided at the highest landing.

\*When a tower scaffold is mounted on castors for use as a mobile scaffold, the following rules should be strictly observed:

- Tower scaffolds should be moved with caution;
- Prior to moving, the route must be checked for power lines, overhead obstructions and for holes and uneven surfaces on the ground;
- When it is necessary to deploy tower scaffolds on an inclined surface, measures must be taken to ensure stability, such as the use of outriggers. Otherwise, tower scaffolds should not be deployed on an inclined surface.
- Never access the scaffold until all its castors are locked to prevent movement;
- Never shift or move the scaffold while anyone is on it;

# SCAFFOLD FRAME SPECIFICATION

